

# St. Jude Patriot

2953 East 15th Ave Vancouver V5M 2K7 434 1633 fax 434 8677 [stjude@shawcable.com](mailto:stjude@shawcable.com) [www.stjude.ca](http://www.stjude.ca)

September 8, 2011

## MEET THE TEACHER

All parents are requested to come to our Meet the Teacher evening on Monday, September 12th at 7 p.m. in the gym. We will start out with a presentations from our Education Committee, Fr. Lawrence and Mr. Perry. Parents will then spend some time in the child's classroom to meet the teacher and have an opportunity to ask questions. Following meeting the teachers at 8:00 pm, there will be some important meetings for various participation categories. Those in Fundraising will meet in the library. Parents working in Maintenance will meet in the gym. Parents who work as supervisors will have a training meeting in the Meeting Room downstairs. This is a mandatory meeting for all parents new to supervision and highly recommended for all. Because of a new policy at St. Jude's this year, parents supervising children will be required to have a criminal record check. What this entails will be explained at this meeting.

## OFFICE REMINDERS

◆ Please ensure that the office has your correct home address and phone numbers. If you have moved, changed phone numbers, cell numbers or emergency contact numbers, you must let the office know immediately. An easy way to do this is by email. The school address is: [stjude@shawcable.com](mailto:stjude@shawcable.com)

◆ Sept 12—Meet the teacher at 7pm

◆ Sept 14— school Mass at 9:30am

◆ Outdoor Education for Grade 7 from Sept 19-Sept 21.

◆ Sept 23rd—Pro D (No School)

◆ Sept. 29 Early Dismissal 12:00 Noon

◆ Sept 30— School Mass at 9:30am Please note the date change!

◆ Sept 30th—Colour day

## STRING ORCHESTRA

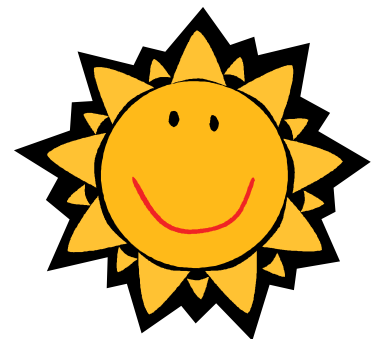


The string orchestra program is starting very soon! A letter about the program was sent home with all grade 2 - 7 students on the first day of school. There will be a registration and sizing meeting on Friday, September 9th at 3pm in the St. Jude meeting room downstairs. It is important to attend this meeting if you are interested in joining the orchestra as this is the easiest time to find the right size instrument. Lessons

will start this Monday, September 12th. The first orchestra rehearsal is Thursday, September 15th. To pre-register your son or daughter, contact Andrew Luchkow at [luchkow@gmail.com](mailto:luchkow@gmail.com) or 604-569-3402."

## PARTICIPATION POSITION

There is a position available in supervision on Thursday and Friday mornings from 8:10am—8:50am. This position will fulfill all of the 50 hours required for participation. If interested, contact Linda Siniscalchi at 778-316-7517 or email at [napoli1@shaw.ca](mailto:napolil@shaw.ca)



---

# PATRIOT ATHLETICS

## Extracurricular Sports

The following is a list of the various extracurricular sport activities we will be offering this year. Permission slips and information forms will be sent home as each activity begins. Extracurricular sports are open to students in Grades 5-7, except for track and field and running club, which are open to students in Grades 3-7. Practices can take place before school, during lunch and after school. Games take place after school. There is a need for parent drivers at times in most extracurricular sports.

Volleyball—September—November (10 weeks)

Cross Country—September—October

Basketball—December—February

Wrestling—March—April

Track and Field—April—June

At this time Volleyball permission forms have been sent out. Please return them signed no later than Friday, September 9.

---

## SCHOOL DROP-OFF AND PICK-UP: *SAFETY FIRST!*

**F**or all those who are new to the school please be advised of our drop off and pick up regulations.

**Please help us to keep our children safe by following the regulations below!**

### **Drop off Regulations:**

\*There will be only one entrance to the parking lot, but two exits. If you plan to stay for a while, please park in a marked parking stall so that the drop off lane moves efficiently.

### **Pick up Regulations:**

1. Students waiting for pick up will wait in the designated area in front of the school cafeteria.
2. Cars enter the parking lot through the middle driveway off 15th Avenue.
3. Cars are to park in a parking spot.
4. Parents walk to "student waiting area" to pick up child/ren. (The teacher supervisor will ensure that all students are safe in the waiting area until a parent picks them up)
5. Cars leave the parking lot following the same patterns as for drop off.

**Please use great caution when entering and leaving the parking lot. Please also note that it is illegal to park your car directly in the entrance of the school on 15th Avenue, and to drop off/pick up on 15th Avenue.**

The Play Area is off limits to all students after school until 3:20 p.m. Supervisors cannot supervise the playground at that time.

Our Parent Supervisors do a great job of ensuring that our students are safe. If they make a particular request of you, please respond graciously and remember that they are acting for the good of our students.

St. Jude School & Parish

# Walk-A-Thon Fundraiser

**When: Friday, October 7, 2011**

**Time: 9:00am - 12:00pm**

**Where: Trout Lake**

Our Goal this year is \$25,000 which will be used towards: Technology Integration, Implementation of a Language Arts program called "The Writing Road to Reading" and School improvements.

**YOUR PARTICIPATION IS KEY TO OUR SUCCESS!**

Walk-A-Thon pledge forms will go home with your child on Friday September 9.

For every \$25 pledge a student brings in they will receive one entry into the draw.

**YOU COULD WIN A SAMSUNG 10.1" NETBOOK OR AN IPOD TOUCH!**

You will also be entered into our weekly draws were you could win a \$5.00 gift certificate or a Mystery prize!

**BONUS! Student who raises the most receives a Samsung 10.1" Netbook!**

**If we reach our goal of \$25,000 we will have a Pajama Day for everyone!**

**We will also have weekly class prizes for the class that brings in the most pledges each week!**



**Serve and Walk with Joyful hearts!**

---

## VISITORS TO ST. JUDE'S

We take student safety very seriously at St. Jude's. Late last year, concerns were raised about the number of people coming into our school during the school day and how we ensure that those who are in the school are there legitimately and could be accounted for. To this end, here is a reminder of existing school policy with respect to visitors to the school, including parents. Anyone who needs to go into the classroom wing (that means through the double doors that lead into the classroom hallway) must first report to the office, sign in, and obtain a visitors pass. In the first week of school, we do not enforce this policy, but beginning next Monday we will. Those parents who are accustomed to say their "good byes" at the classroom door are asked to do this at the entrance to the school instead. We greatly appreciate your cooperation in this matter. If you have any questions about this, don't hesitate to speak with Mr. Perry.

---

## PERSONAL ELECTRONIC DEVICES

It is a school policy that students are not to bring personal electronic devices to school. This includes mp3 players, ipods, game consoles, etc.. Some students have cell phones for safety reasons. If your child brings a cell phone to school, it must remain off and in the backpack during school time. Thank you for your cooperation.

# September 2011

Sun	Mon	Tue	Wed	Thu	Fri	Sat
				1	2	3
4	5	6 First Day of School	7	8	9 String Or- chestra Infor- mation and Rental event at 3pm.	10
11	12 Meet the Teacher at 7pm	13	14 School Mass at 9:30am	15	16	17
18	19 Gr. 7 Outdoor Education	20 Gr. 7 Outdoor Education	21 Gr. 7 Outdoor Education	22	23 Professional Day- <b>No School</b>	24 Education Committee Leadership Conference
25	26	27	28	29 School Mass at 9:30am. <b>Early Dis- missal at 12 noon</b>	30 Colour Day	

## St. Jude School

2953 East 15th Ave Vancouver V5M 2K7 434 1633 fax 434 8677 [stjude@shawcable.com](mailto:stjude@shawcable.com) [www.stjude.ca](http://www.stjude.ca)